



Alewife Station

David Davison
"Alewife Wayside"
Tile murals located on the wall alongside the pedestrian ramp

Richard Fleischner

Untitled

Three acre environmental site with plantings, pavers, and stone blocks located on the south side of the station



Joel Janowitz

"Alewife Cows"

Mural on steel panels located in the bus waiting area



Alewife Station

William Keyser Jr.

Untitled

Two carved maple benches located in the Park-and-Ride area

Alejandro and Moira Sina
"The End of the Red Line"
Neon sculpture suspended over the tracks



Nancy Webb

Untitled

One hundred decorative bronze floor tiles installed throughout the station





Davis Station

Sam Gilliam

"Sculpture with a D"

Painted aluminum sculpture hung above the Outbound platform

Various Authors

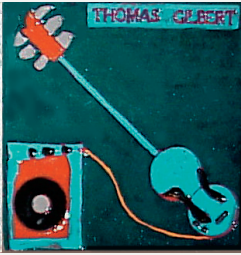
Eleven poems inscribed into the brick pavers on the station platform



James Tyler

Untitled

Life size cast masonry statues
in Davis Square Plaza



Davis Station

Jack Gregory and Joan Wye
Belfast Bay Tileworks
"Children's Tile Mural"
Ceramic tiles installed along the corridor leading to the turnstiles

Porter Square Station

Carlos Dorrien
"Ondas"
Carved granite wave installed on each side of the station entrance



Mags Harries
"The Glove Cycle"
Narrative bronze sculptures located throughout the station

Porter Square Station



David Phillips

“Porter Square Megaliths”

Sliced boulders with cast bronze sections located in the Porter Square plaza

William Reimann

Untitled

Six granite bollards with symbols near the station entrance



Susumu Shingu

“Gift of the Wind”

Forty-six foot tall steel kinetic sculpture displayed in Porter Square plaza



Harvard Square Station

Dimitri Hadzi
"Omphalos"
Granite sculpture located
in Harvard Square

Gyorgy Kepes
"Blue Sky on the Red Line"
Stained glass wall in the
bus waiting area



Joyce Kozloff
"New England Decorative Arts"
Ceramic tile mural installed over
the entrance to the bus area



Harvard Square Station

Ann Norton

"Gateway to Knowledge"

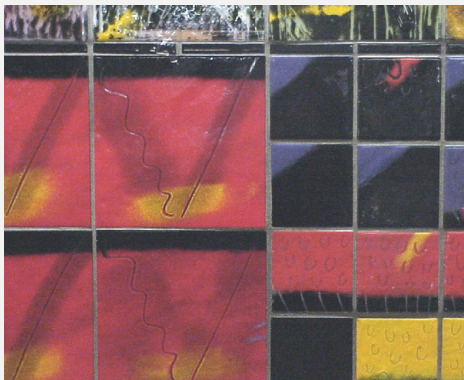
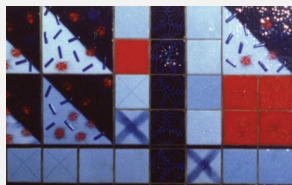
Brick sculpture located
in Brattle Square

Central Square Station

Elizabeth Mapell

"East Indian"

Seven fused glass tile murals
installed on the Inbound and
Outbound platforms



Anne Storrs and Dennis Cunningham

"Circle Square"

One hundred ceramic tile medallions
mounted above the station columns on
the Inbound and Outbound platforms





Kendall Station

Paul Matisse

"Kendall Band":

"Kepler", "Pythagoras" and "Galileo"

Three aluminum, teak, and steel sound making sculptures located between the Inbound and Outbound platforms

Park Street Station

Ralph Helmick

"Benedictions"

Two bronze hands mounted over the Inbound and Outbound tracks



Downtown Crossing Station

Lewis "Buster" Simpson

"Situations"

Thirty-one granite seats located on the Inbound and Outbound platforms



Broadway Station

St. Brigid's School Students

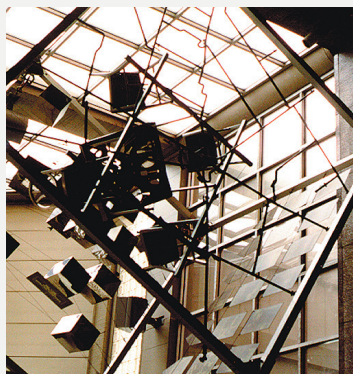
Untitled

Two hundred decorative ceramic tiles mounted on fifty columns at the Inbound and Outbound platforms

Jay Coogan

"Domestic Objects & Tools of the Trade"

Sixty enamel on steel sculptures mounted above the station stairway

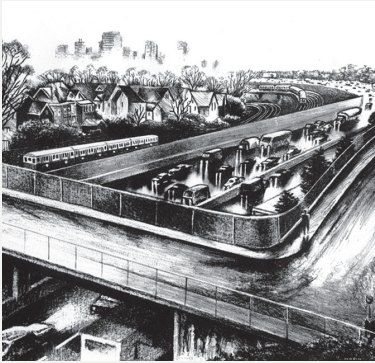


Andrew Station

Ross Miller

"Andrew Station Time Capsule"

Metal boxes, table, chairs, plates and copper tubing suspended within a glass atrium



Savin Hill Station

James Hobin

Three 4' x 4' black and white murals, located on the central platform



Fields Corner Station

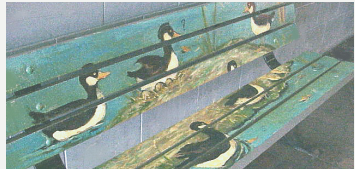
African American Museum of Art with Carlos Byron

Painted benches located on the Inbound platform



Ironдина DaSilva,

Jeremiah E. Burke High School student



Francine Francis,

Boston Latin High School student

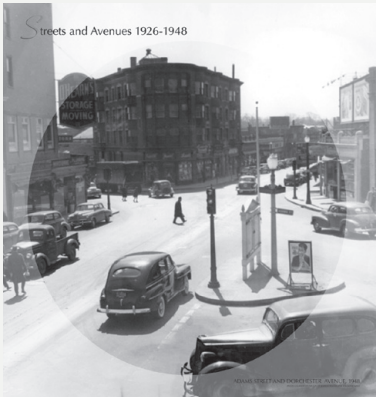


Quincy Adams Station

Elaine Calzolari

"Cirrus Clouds"

Three stainless steel and mylar sculptures hung above the tracks



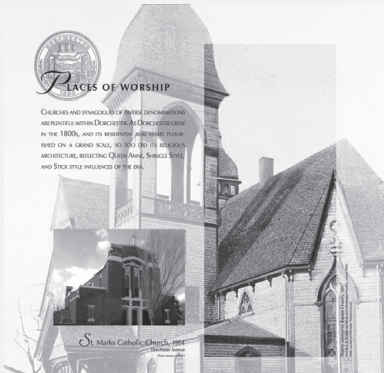
Fields Corner Station Historic Murals

MBTA Design Department/Graphics
 Twenty-eight 4' x 4' panels located on the Inbound and Outbound platforms



Shawmut Station Historic Murals

MBTA Design Department/Graphics
 Twenty-five 4' x 4' panels located on the Inbound and Outbound platforms



Mattapan Station Historic Murals

MBTA Design Department/Graphics
 Four 4' x 4' panels located on the Inbound and Outbound platforms

