

# Get there

Making your way  
on the Franklin Line  
during PTC installation

## Franklin Commuter Rail

What you need to know



### **WEEKEND Shuttle Bus**

Forge Park/495 - Readville Station

April 7 – May 27



# Weekend overview

1. What's going on?
2. Why close part of the line?
3. Why do you have to stop trains from running?
4. What's getting installed?
5. Why now?
6. Accessible bus shuttle service
7. Shuttle boarding and drop-off on nearby streets
8. Coordination between shuttle buses and trains
9. Getting the word out
10. Contact us

# What's going on?

From April 7 – May 27, there will be **no weekend train service between Forge Park/495 and Readville Station** while we install equipment needed for Positive Train Control (PTC), a federally-mandated, safety control system that automatically reduces train speeds when needed, and helps to avoid collisions.

# Why close part of the line?

Amtrak is nearly done with their portion of PTC installation - between Readville and South Station - so that stretch of line can remain open.

The line needs to be closed while the MBTA works on this phase of PTC between Readville and Forge Park/495.

# Why do you have to stop trains from running?

There will be crews working along the line, installing poles, fiber optic cable, signal houses and antenna. Due to the number of crews working on the line performing different activities in different locations, everything outbound of Readville Station needs to be shut down.

# What's getting installed?



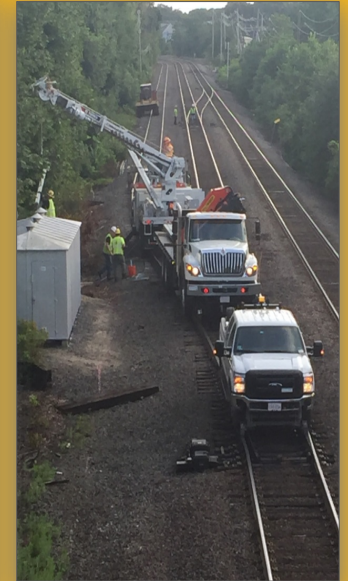
**Antennas**



**Fiber optics**



**Wood poles**



**Signal houses**

# Why now?

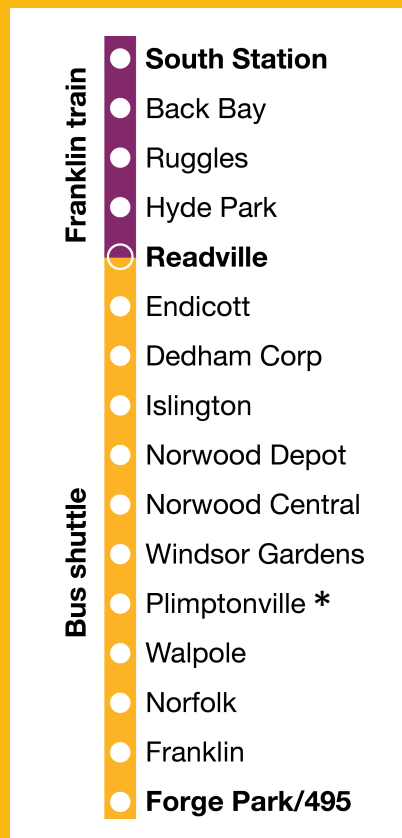
Our timeframe is tight because of a federal deadline. Every commuter rail line needs Positive Train Control equipment installed, so we need to get going as soon as winter weather ends.



# Accessible bus shuttle service

**Accessible bus shuttles travel between Forge Park/495 and Readville Station, making all station stops along the way. At Readville Station, connect to the Franklin train, making all stops\* between Readville and South Station.**

\*There is no weekend commuter rail service at Plimptonville Station. Shuttle buses will not stop at Plimptonville.





# Shuttle boarding and drop-off on nearby streets

- Bus shuttles are unable to enter, or turnaround at some Commuter Rail stations due to space limitations.
- Directional signage posted at every station and on the street to aid customers.
- Shuttle schedule, and accessible location descriptions for each stop posted online at [mbta.com/Franklin](http://mbta.com/Franklin) by March 20.

# Coordination between shuttle buses and trains

- The inbound shuttle bus schedule will follow the Franklin commuter rail schedule. (In general, trains run every 2 hours on weekends.)
- Outbound shuttles will leave Readville Station five minutes after the train arrives.



# How much does the shuttle cost?

- **The shuttle bus is free.**
- Pay a Zone 2 train fare in Readville.
- Senior/TAP customers pay half fare. Two children 11 and under ride free with 1 adult.

# Getting the word out

## **Mbta.com/franklin:**

- March 16 - Landing page posted
- March 20 - Shuttle schedule and boarding locations posted

## **Plus:**

- Press release
- Info to state and local officials, chambers, libraries, community centers, police, fire
- Mbta.com/franklin
- Tweets, T-alerts, and emails
- Station banners
- Station and train announcements
- Platform LED messages
- Schedule handouts
- Newspaper ads
- Directional signage to on-street boarding locations



# Contact us

**617-222-3200**

Call for questions, schedules, or trip planning.

For more information go to **[mbta.com/franklin](https://www.mbta.com/franklin)**

Thank you for your patience during installation!